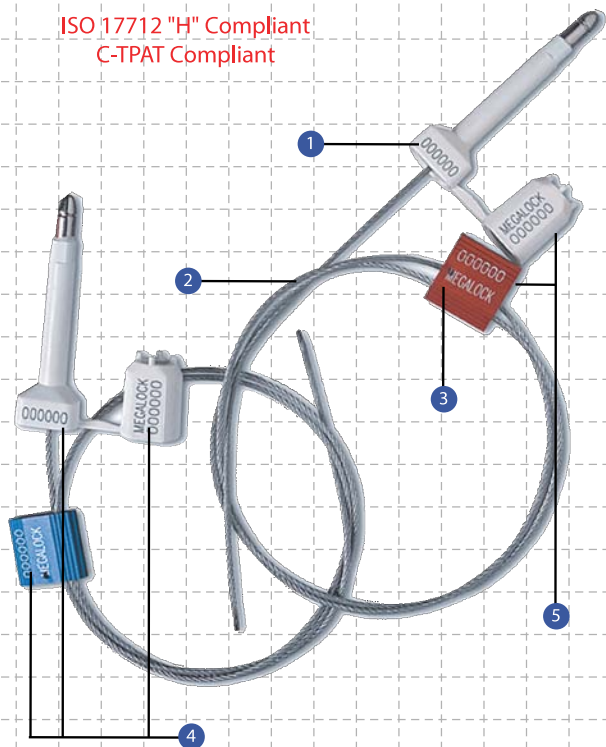


# Mega Lock

PREVENTION. PROTECTION. PEACE OF MIND.

## High Security Seal

ISO 17712 "H" Compliant  
C-TPAT Compliant



## Double Security Barrier Seal

1. The 2 self-locking mechanisms are easily locked by hand.
2. The Mega Lock can only be removed by a strong cutter. It takes two cuts to open the Mega Lock seal.
3. The Mega Lock can be colour coded to suit individual requirements. The cable locking body can be anodized in 5 standard colours and the bolt seal is moulded with high impact ABS in a range of 5 different colours.
4. Customized marking is etched on the two locking bodies with permanent laser technology. Identical serial numbers, logo and bar codes can be marked on all three parts of the seal if required.
5. The Mega Lock is also known as the "synergy seal". The solid combination of two proven barrier seals provides higher security than when the seals are used separately.

## Specifications

Product	Material	Cable Length	Diameter	Pull Strength	Marking Area	Max Marking Digits
Mega Lock	Aluminium body & ABS coated bolt seal with galvanized steel wire rope	1100mm_500mm (Std) * customised lengths available	Cable : Ø 2.5mm Bolt : Ø 11.5mm	1,800kg	Body: 20mm x 20mm Pin: 7mm x 16mm Bush: 10mm x 24mm	8
Carton Quality	Dimensions mm	Weight kg/carton	Volume m <sup>3</sup> /carton	Standard Colours		
Carton size / weight will vary according to customised cable lengths. Please contact us for details.				Cable Lock: Red, Green, Black, Blue & Gold Klicker bolt: Blue, Green, Yellow, Red & White		

## High Security Barrier Seal

The Mega Lock provides the proven security features and strength of the Cable Lock seal (MCL250) and the Klicker bolt seal. Both these seals are used individually worldwide to protect high valuable goods during transport in containers and trucks.

The Mega Lock boasts a combination of solid materials: rust proof aluminium body, a strong steel cable combined with a mild steel bolt and barrel moulded with high impact ABS. The synergy between the

strong materials and an innovative tamper evident design makes the Mega Lock uniquely secure.

The Mega Lock consists of the Klicker seal which complies to the ISO 17712 Standard as a high security seal.

**Be assured of better security with our innovative use of materials and industrial design.**



- AFRICA
- AUSTRALIA
- CHINA
- DENMARK
- FRANCE
- HONG KONG
- HUNGARY
- INDONESIA
- JAPAN
- MALAYSIA
- NEW ZEALAND
- PHILIPPINES
- SINGAPORE
- TAIWAN
- THAILAND
- UK
- USA

© 2010 MegaFortris. All rights reserved. Reproduction in whole or in part without written permission is prohibited. Products and names of products described here are trade names of the MegaFortris group of companies. Features and specifications are subject to change without notice as MegaFortris products undergo constant development.

