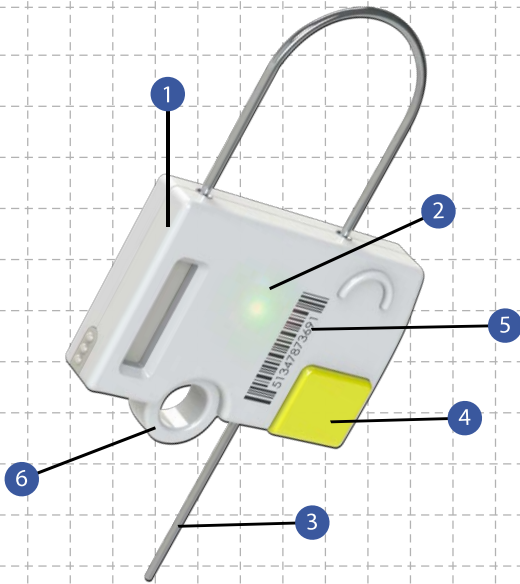


IntellEseal I (indoor)

PREVENTION. PROTECTION. PEACE OF MIND.

Electronic seal



1. Solid, nonflammable shock proof plastic body
2. Clear flash signal for visible control
3. Stainless steel wire
4. iCap for protection of the locking
5. Laser marked barcode or logo
6. Can be attached with a metal chain to objects like airline trolleys

Specifications for I-Seal

General

Reusable standard cable length	13 cm
Cable diameter	1.5 mm
Pull strength	Approx 50 kg
Dimensions	65 x 13 x 50 mm (b x d x h)
Weight	50 gram
Operating environment	Indoor Use only
Operating temperature	-10°C to 40°C
Humidity	5% to 95%, non-condensing
RoHs	Compliant to European Union directive 2002/95/EC

Recycle ratio

All parts, including battery	98%
------------------------------	-----

RFID Reading

Protocol	ISO18000-6B, ISO18000-6C (EPC GEN2)
Frequency	Standard ISM 902 ~ 928 MHz and ISM 865 ~ 868 MHz, other frequency available

Packaging

IntellEseal	10 pcs per box
iCaps , plain (optional)	1000 pcs per box
iCable , plain (optional)	50 pcs per bag

Lifetime

Expected Battery life	2 years
-----------------------	---------

The Situation

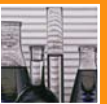
The audit trail of a security seal on your returnable transport items is as important as it is challenging. Has the consignment been sealed at the right location, when was this done and might it be that it has been opened without authorisation during transit?

The Solution

The reusable IntellEseal deals with these issues and provides you with a clear signal of flawless transport, a clear warning of tampering and a datalog of the last 200 events. The tamper evident, indicative IntellEseal uses the latest, standardised UHF RFID technology and is supported by a userfriendly software package. Added security against unwanted opening can be provided by using a small security cap. The stainless steel cable can be exchanged in case of wear or breakage. A full recycling program is available for all parts.

The Software

The logged events can be wirelessly downloaded to the iTag application and will show you various parameters such as date/time of closing, date/time of opening and the location where the seal was closed. On demand, interfacing with existing applications is available.



- AFRICA ■
- AUSTRALIA ■
- CHINA ■
- DENMARK ■
- FRANCE ■
- HONG KONG ■
- HUNGARY ■
- INDONESIA ■
- JAPAN ■
- MALAYSIA ■
- NEW ZEALAND ■
- PHILIPPINES ■
- SINGAPORE ■
- TAIWAN ■
- THAILAND ■
- UK ■
- USA ■