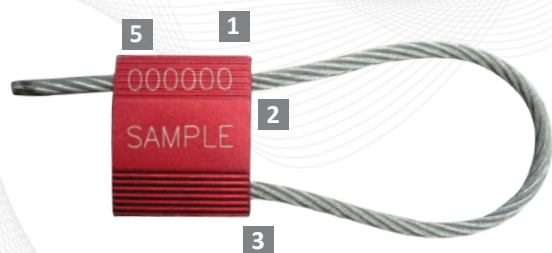




High Security Seal · Data Sheet

Cable Lock 500



Strong, Adjustable Barrier and Semi Barrier Cable Seals

ISO 17712 Compliant · C-TPAT Compliant

The Cable Locks are user-friendly and highly tamper-evident. They are available with different cable diameters to secure various applications with different security requirements.

The seals are secured once the wire passes through the one-way locking mechanism. It must be adjusted to fit tightly to the application to maximize security and prevent tampering.

Our Cable Locks seals are widely used on trucks, tanker trucks, and air cargo containers, shipping containers, rail cars calibrators and valves across various industries.

Features

- 1 The body is designed with a rib pattern, which protects markings during rough handling.
- 2 The Cable Lock's one-way locking mechanism provides fast and easy sealing.
- 3 One end of the cable is permanently secured into the locking body.
- 4 The Cable Lock is anodized in solid colors, which accommodates customized laser marking. Anodizing also makes color coding possible and eases identification from a distance.
- 5 All Cable Locks are laser engraved with permanent laser marking. Laser marking offers the highest level of security as it cannot be removed and replaced.

Technical Specifications

PRODUCT

Product Code	Material	Cable Length std.	Cable Diameter	Pull Strength	Marking Area	Max Marking Digits
Cable Lock 500	Body: Aluminium Cable: Mild steel wire	356 mm (14 in)	Ø 5.0 mm (Ø 0.20 in)	1500 kgs (3307 lbs)	Body: 3.0 x 3.6 cm (1.18 x 1.42 in)	15

INNER CARTON

Product Code	Carton Quantity	Dimensions inches	Weight lb/carton	Standard Colors
Cable Lock 500	150 pcs	17.5 x 10 x 5.5 in	28 lbs	

Carton size/ weight will vary according to customized cable lengths. Please contact us for details.



FMM EXCELLENCE AWARD 2012
QUEST FOR CONTINUOUS IMPROVEMENT
BEST MANUFACTURER IN MALAYSIA IN 2012